



MONTHLY MEMBERSHIP PROGRESS REPORT

District 26 M1

Results as of: 4/30/2015

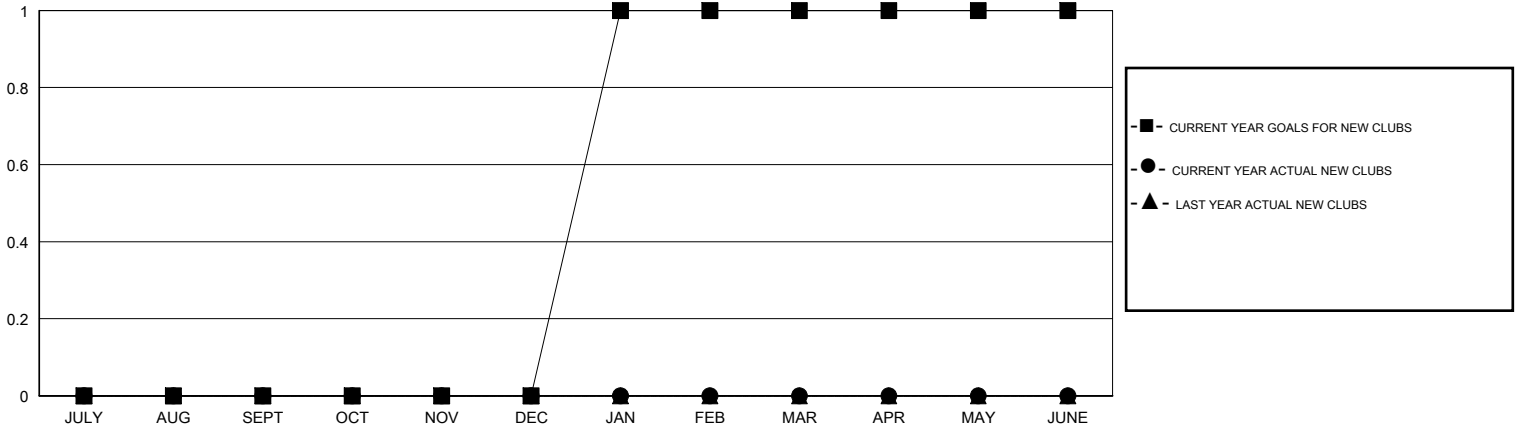
GMT: HAL GRIFFIN

LOCATION MISSOURI

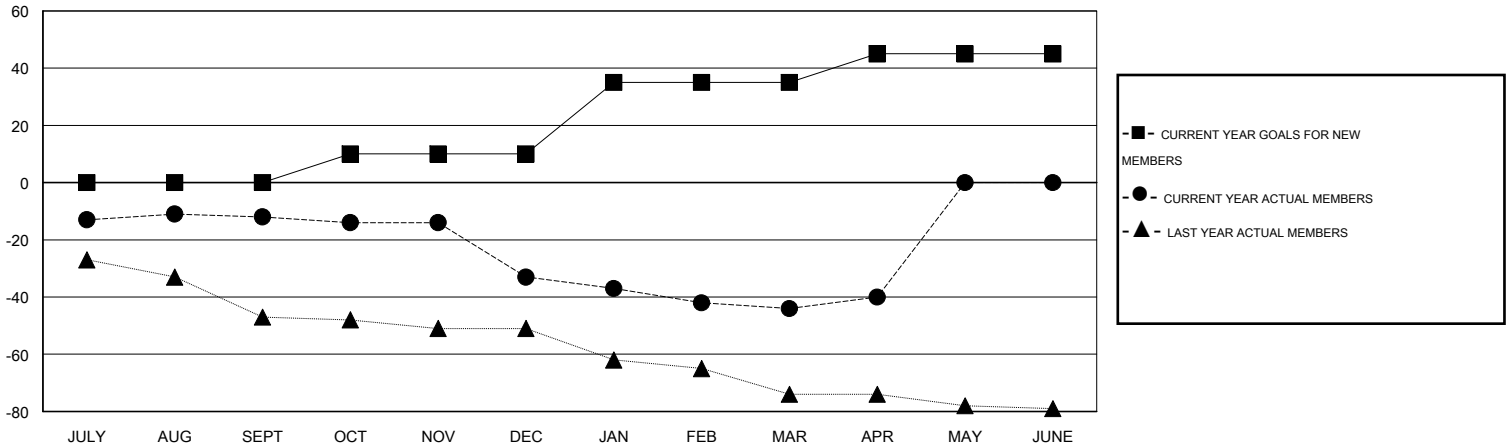
GMT CA 1

Clubs					Members				
RESULTS FOR 2014-2015					RESULTS FOR 2014-2015				
QUARTER	NEW CLUB GOAL	NEW CLUBS	DROPPED CLUBS	NET GAIN/LOSS	QUARTER	NEW MEMBER GOAL	CHARTER AND NEW MEMBERS ADDED	DROPPED MEMBERS	NET GAIN/LOSS
JULY/AUG/SEPT	0	0	0	0	JULY/AUG/SEPT	0	39	51	-12
OCT/NOV/DEC	0	0	2	-2	OCT/NOV/DEC	10	12	33	-21
JAN/FEB/MAR	1	0	0	0	JAN/FEB/MAR	25	24	35	-11
APR/MAY/JUNE	0	0	0	0	APR/MAY/JUNE	10	14	10	4

GOALS AND ACTUAL NEW CLUBS CUMULATIVE



GOALS AND ACTUAL MEMBERS CUMULATIVE



DROPPED CLUBS: 2	27 CLUBS OF 46 ADDED 1 OR MORE NEW MEMBERS	<u>GENDER DISTRIBUTION</u>	
		MALE	912 (77.42%)
<u>DROPPED MEMBERS</u>	CLICK HERE FOR HEALTH ASSESSMENT DATA	FEMALE	266 (22.58%)
DECEASED		12	FAMILY UNIT MEMBERS
CLUB CANCELLED	23	HEAD OF HOUSEHOLD	82
OTHER	94	NON-HEAD OF HOUSEHOLD	83
TOTAL	129		